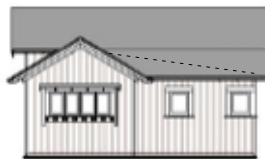
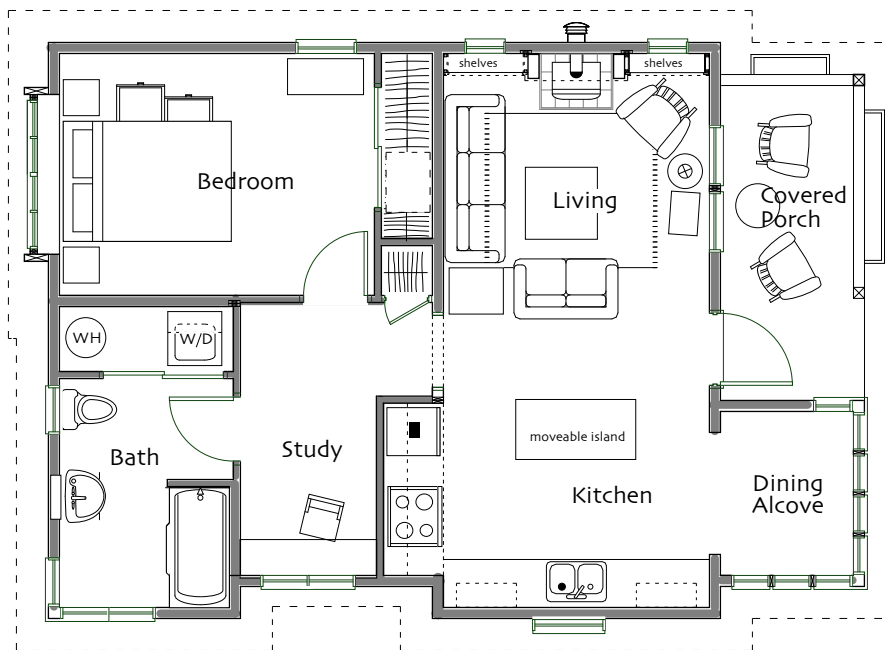


First Floor

Living/Kitchen 11' x 23'
Dining Alcove 6'-10" x 6'
Bedroom 1 10' x 15'-6"
Study 5'-8" x 11'-4"
Bath full w/Laundry

Total Heated Area 708 sq ft

Footprint 24' x 34'



© 2020 Ross Chapin Architects • Sizes are approximate / Plans are subject to change

The GoodFit Collection

Cottages and Small Houses

PO Box 1595 . Langley, Washington 98260 . hello@goodfitplans.com . www.goodfitplans.com

Betty Lu