

### First Floor

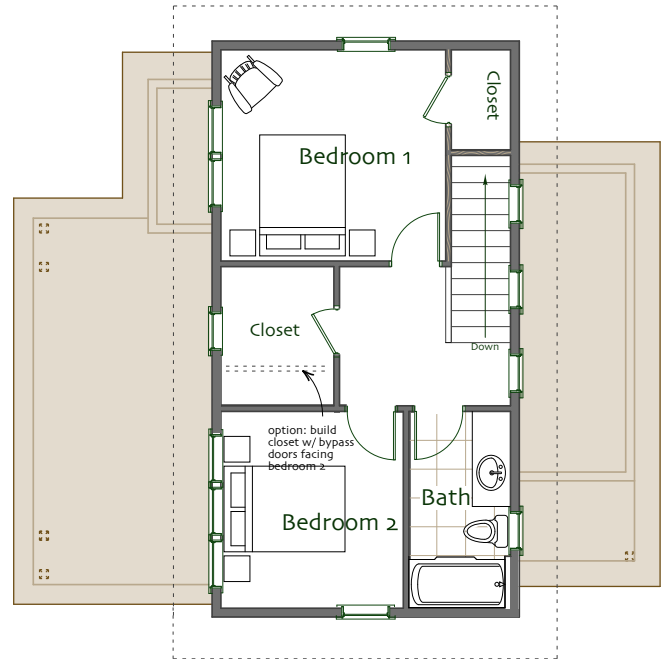
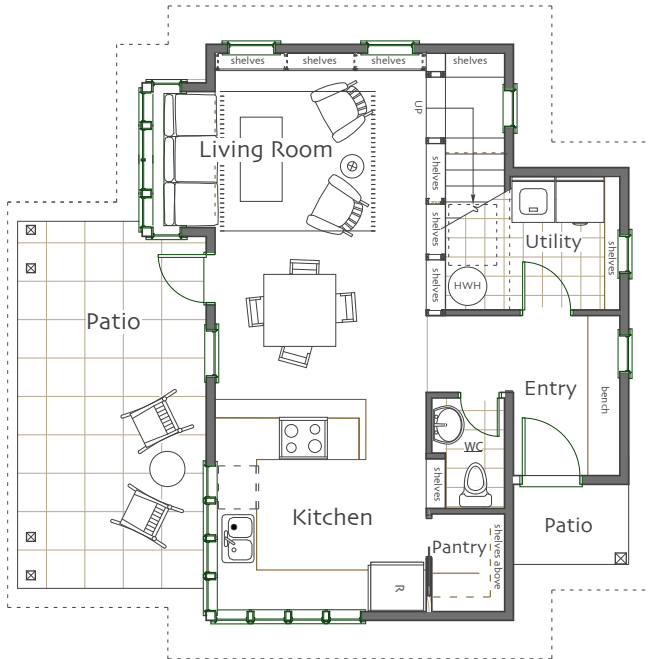
Living/Dining 17'-9" x 11'  
Kitchen 11' x 11'-3"  
Utility Room 7' x 5'-6"  
Bathroom half

### Second Floor

Bedroom 1 11' x 11'-6"  
Bedroom 2 10'-3" x 9'-6"  
Bathroom full

**Total Heated Area 1086 sq ft**

**Footprint 30' x 31'**



© 2020 Ross Chapin Architects • Sizes are approximate / Plans are subject to change

# The GoodFit Collection

**Cottages and Small Houses**

PO Box 1595 . Langley, Washington 98260 . [hello@goodfitplans.com](mailto:hello@goodfitplans.com) . [www.goodfitplans.com](http://www.goodfitplans.com)

**Brightside  
House**