

### First Floor

Living	12' x 11'-8"
Dining	10'-6" x 11'-4"
Kitchen	9'-9" x 9'-6"
Bedroom 1	10'-4" x 11'
Bathroom	full
W/C	half

### Second Floor >5'

Bedroom 2	12' x 6'-10"
Bedroom 3	13'-3" x 8'-9"
Bathroom	three-quarter

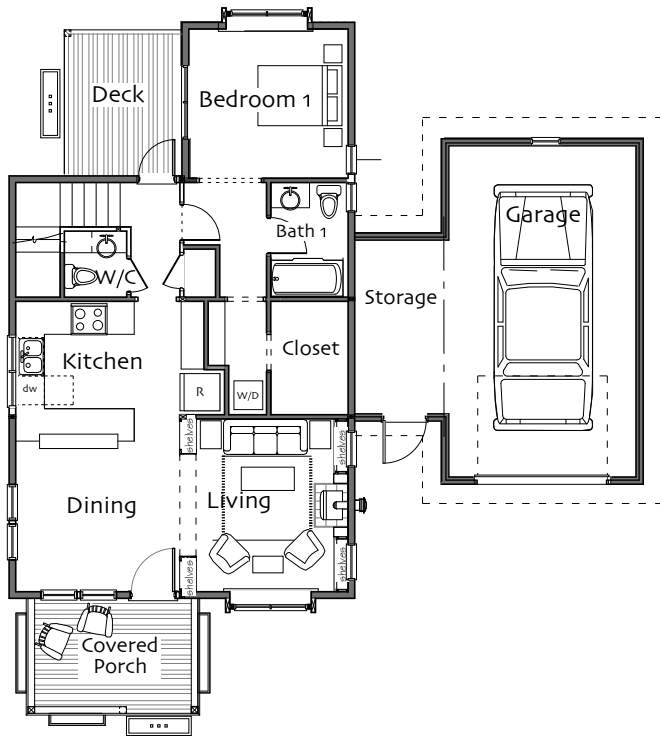
**Total Heated Area 1387 sf**

Loft	12' x 4'
Covered Porch	7'-6" x 10'-10"

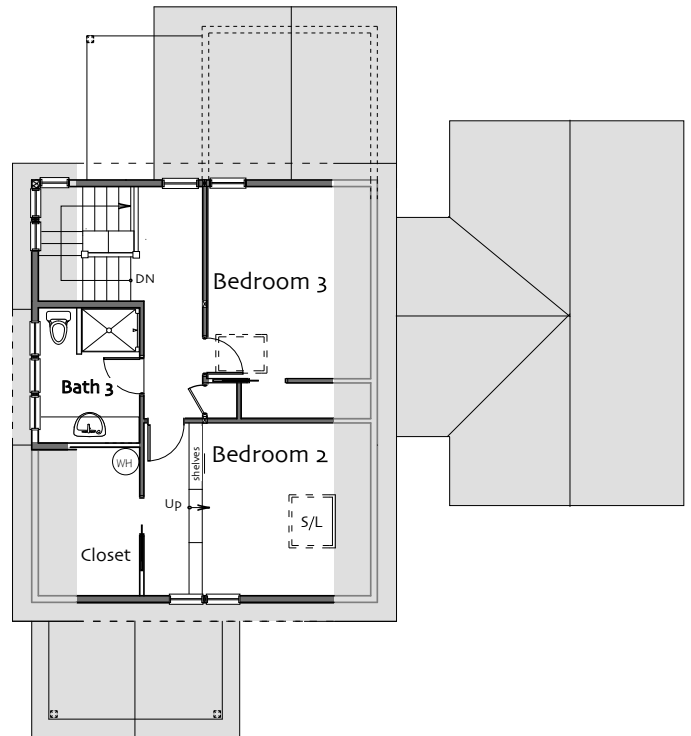
### Garage:

Car	30'-4" x 23'
Storage	12' x 6'-6"

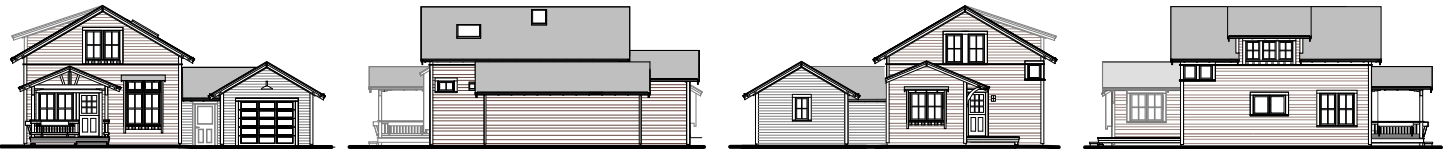
**Footprint 44' x 48'**



**First Floor**



**Second Floor**



© 2020 Ross Chapin Architects • Sizes are approximate / Plans are subject to change

# The GoodFit Collection

**Cottages and Small Houses**

PO Box 1595 . Langley, Washington 98260 . [hello@goodfitplans.com](mailto:hello@goodfitplans.com) . [www.goodfitplans.com](http://www.goodfitplans.com)

**Erin w/Side  
Garage**