

First Floor

Living/Kitchen 15'-6" x 23'
Bedroom 11' x 15'-2"
Bathroom full

Second Floor

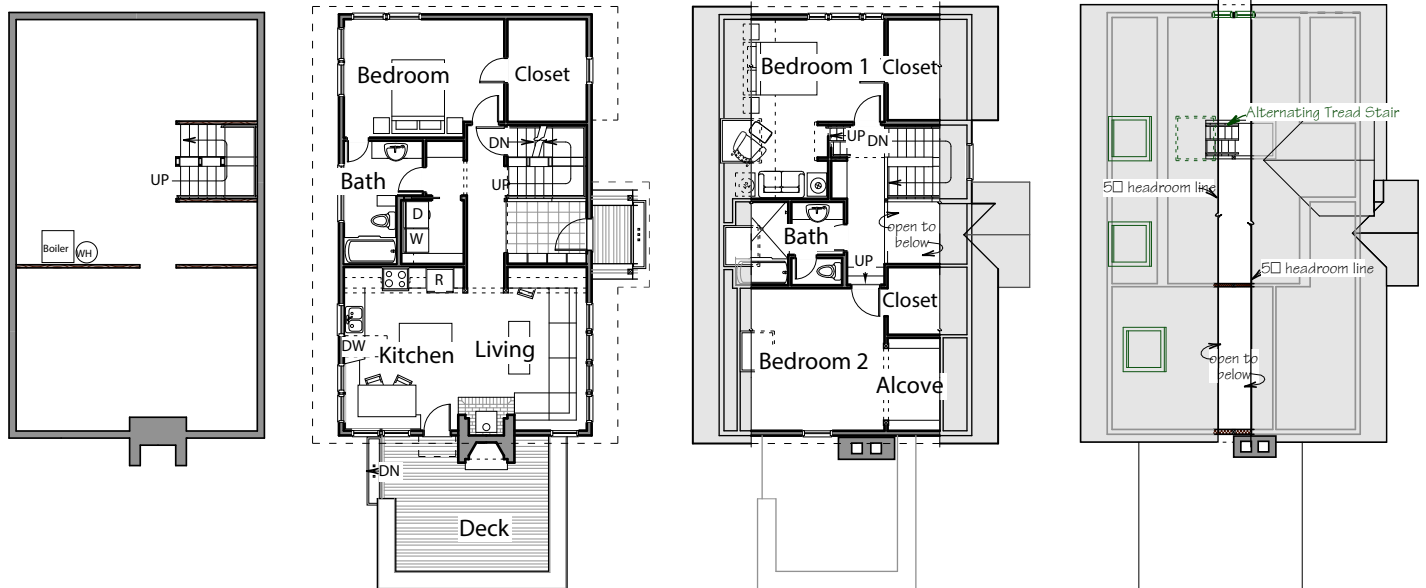
Bedroom 1 10' x 13'-6"
Bedroom 2 15'-6" x 14'
Bathroom full

Loft Space >5' 3'-6" x 26'

Basement (unheated) 40' x 24'

Total Heated Area 1679 sq ft

Footprint 54' x 28'

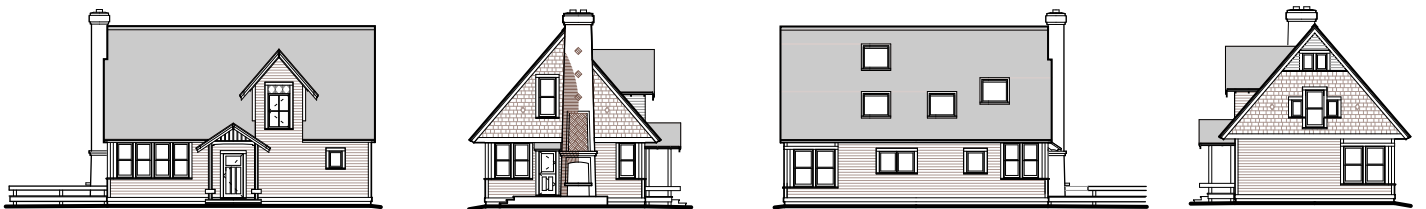


Basement
960 sq ft unfinished

First Floor

Second Floor

Loft
(accessible by ladder)



© 2020 Ross Chapin Architects • Sizes are approximate / Plans are subject to change

The GoodFit Collection

Cottages and Small Houses

PO Box 1595 . Langley, Washington 98260 . hello@goodfitplans.com . www.goodfitplans.com

**Gable
House**