

First Floor

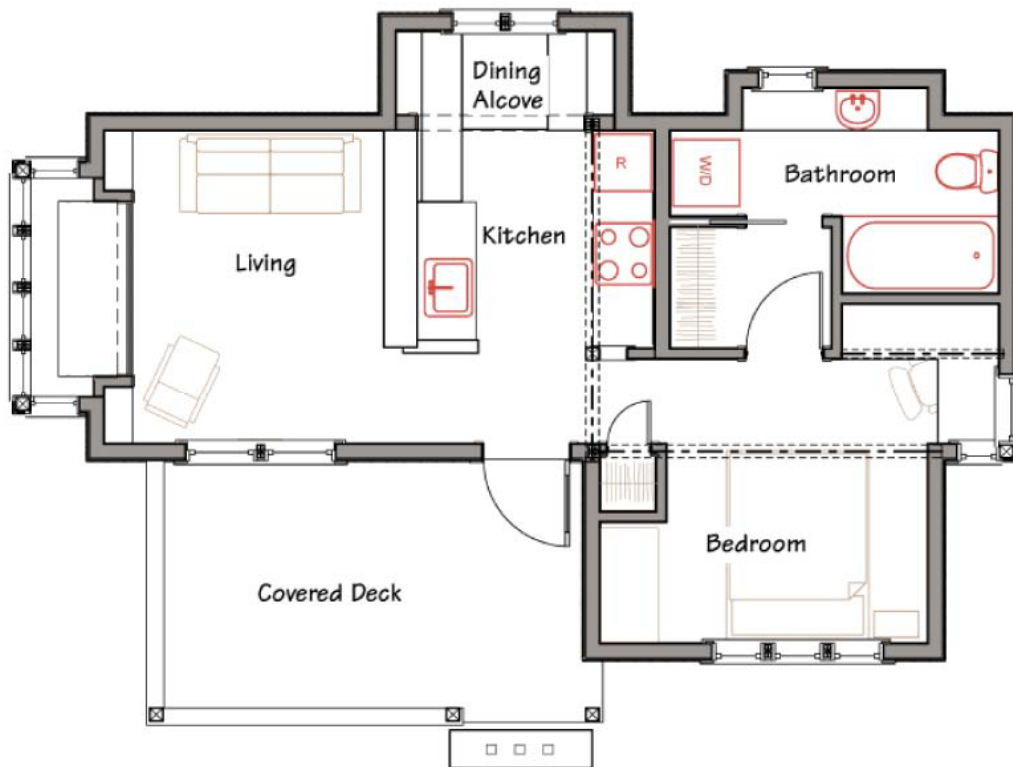
Living/Kitchen 19'-4" x 11"
Dining Alcove 7'-8" x 3'
Bedroom 11'-6" x 10'
Bathroom full

Total Heated Area 540 sq ft

Loft 8' x 14'-5"
(ceiling peak 3'-6")

Covered Porch 9' x 15'

Footprint 35' x 24'-9"



P



© 2020 Ross Chapin Architects • Sizes are approximate / Plans are subject to change

The GoodFit Collection

Cottages and Small Houses

PO Box 1595 . Langley, Washington 98260 . hello@goodfitplans.com . www.goodfitplans.com

Lizzie