

### First Floor

Main Room	14' x 29'
Kitchen	13'-8" x 7'-5"
Office	11'-6" x 7'-9"
Bathroom	half

### Second Floor >5'

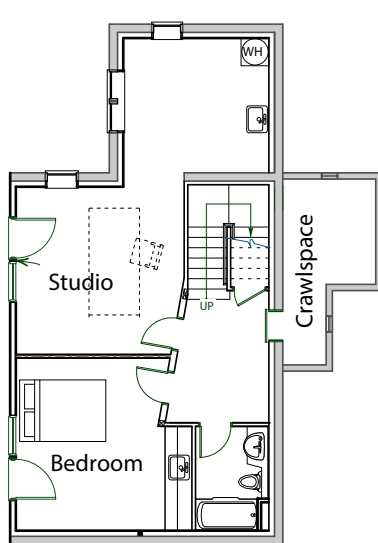
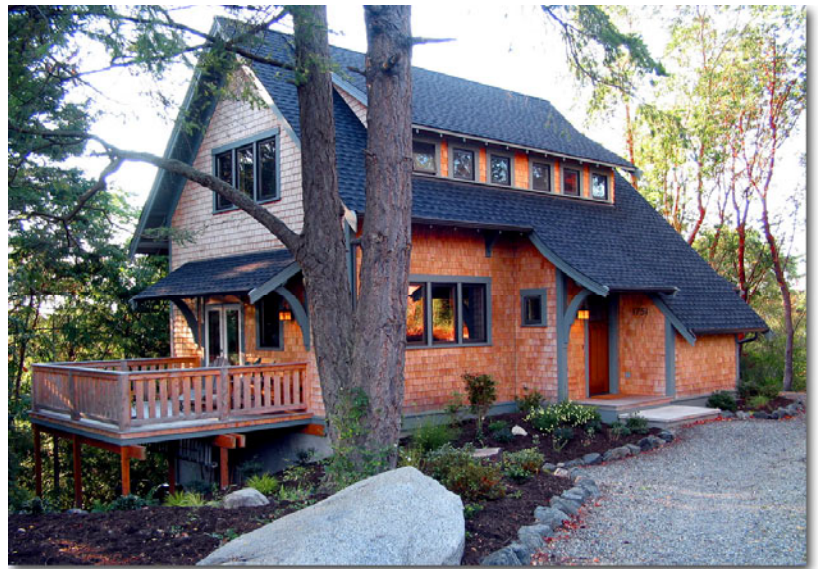
Bedroom 1	10' x 12'-3"
Bedroom 2	14'-5" x 13'
Bathroom	full

### Lower Floor

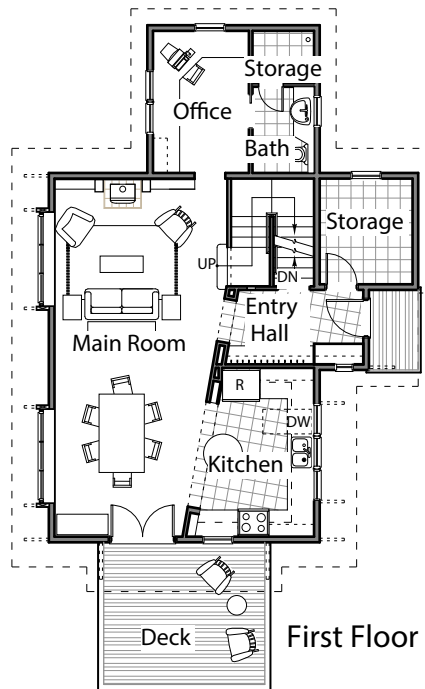
Studio	13'-6" x 13'-6"
Guest Bedroom	14' x 12'
Bathroom	full

**Heated Heated Area:** 2398 sq ft 4

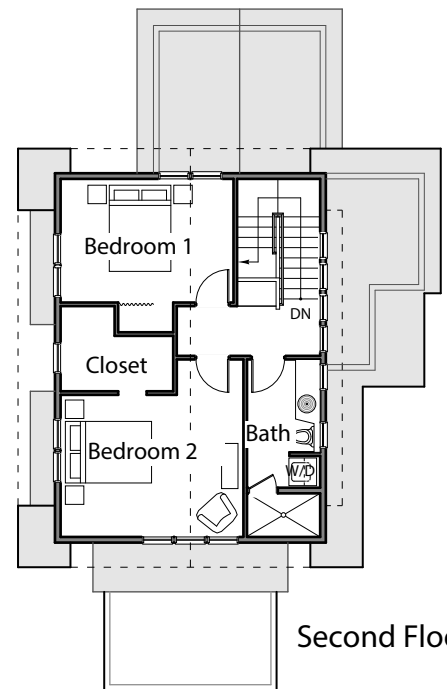
**Footprint** 54' x 30'



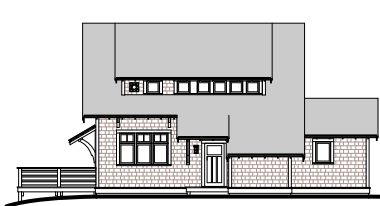
Basement



First Floor



Second Floor



© 2020 Ross Chapin Architects • Sizes are approximate / Plans are subject to change

**The GoodFit Collection**  
Cottages and Small Houses

PO Box 1595 . Langley, Washington 98260 . [hello@goodfitplans.com](mailto:hello@goodfitplans.com) . [www.goodfitplans.com](http://www.goodfitplans.com)

**Morgan Hill**