

### First Floor

Living Room	12' X 14'
Kitchen	12' X 14'
Dining Room	8' X 9'
Bedroom 1	14' X 13'
Bathroom 1	full
Bathroom 2	half
Covered Porch	8' X 14'

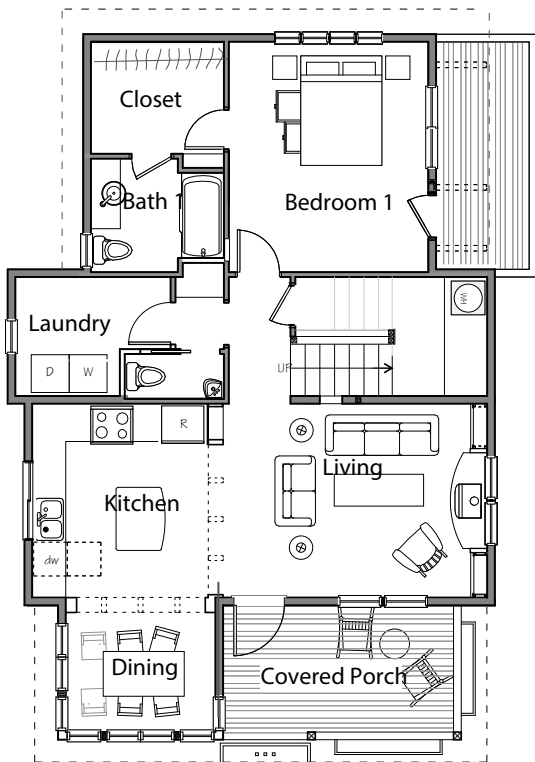
### Second Floor

Bedroom 2	12' X 14'
Bedroom 3	11'-6" x 16'
Bathroom 3	full

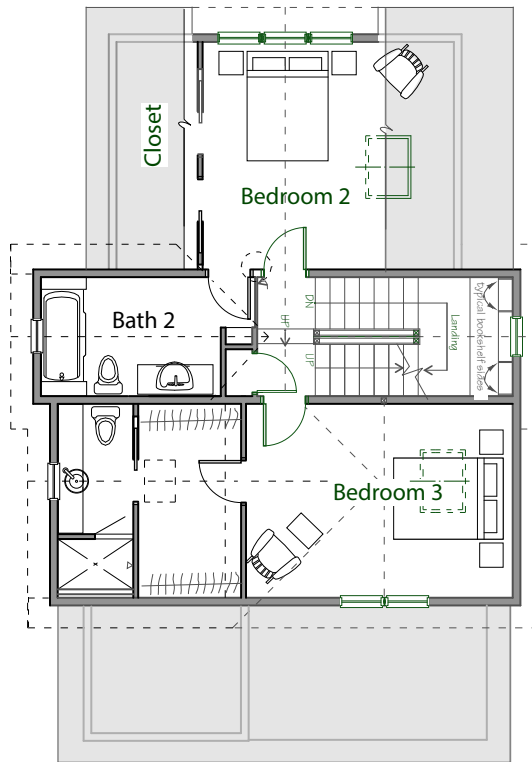
Tower Room	7' x 7'
------------	---------

**Total Heated Area** 1774 sq ft

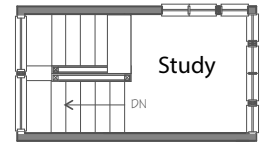
**Footprint** 32' x 42'



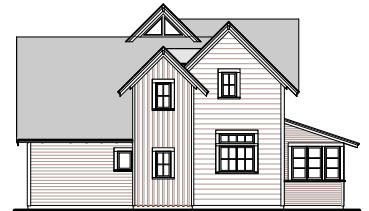
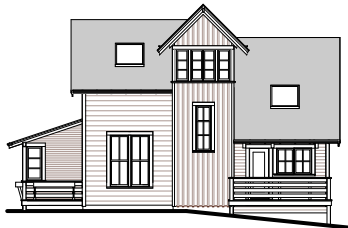
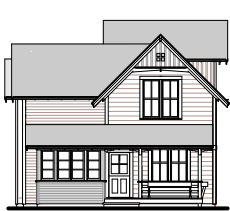
First Floor



Second Floor



Third Floor



© 2020 Ross Chapin Architects • Sizes are approximate / Plans are subject to change

# The GoodFit Collection

Cottages and Small Houses

PO Box 1595 . Langley, Washington 98260 . [hello@goodfitplans.com](mailto:hello@goodfitplans.com) . [www.goodfitplans.com](http://www.goodfitplans.com)

Plum  
Corner