

Dimensions

First Floor

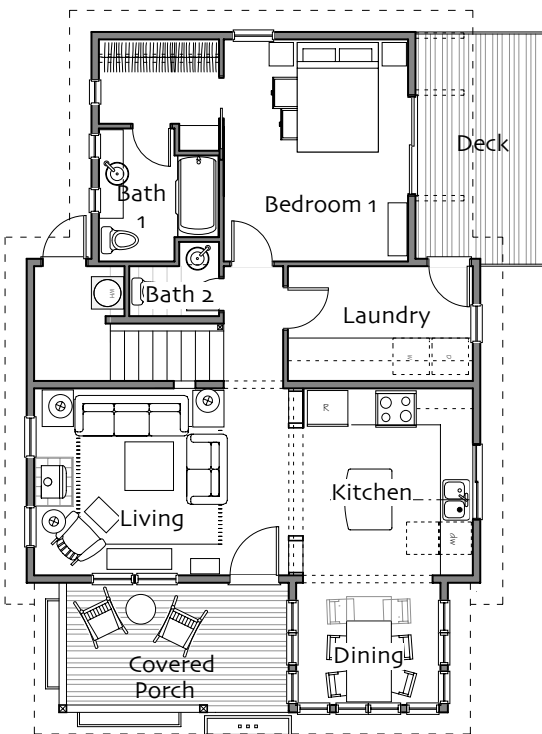
Living Room	15'-6" x 11'-9"
Kitchen	10'-6" x 11'-9"
Dining Room	9' x 7'-6"
Bedroom 1	11'-6" x 13'-6"
Laundry	7' x 11'-6"
Bathroom 1	full
Bathroom 2	half
Covered Porch	14' x 8'

Second Floor > 6'

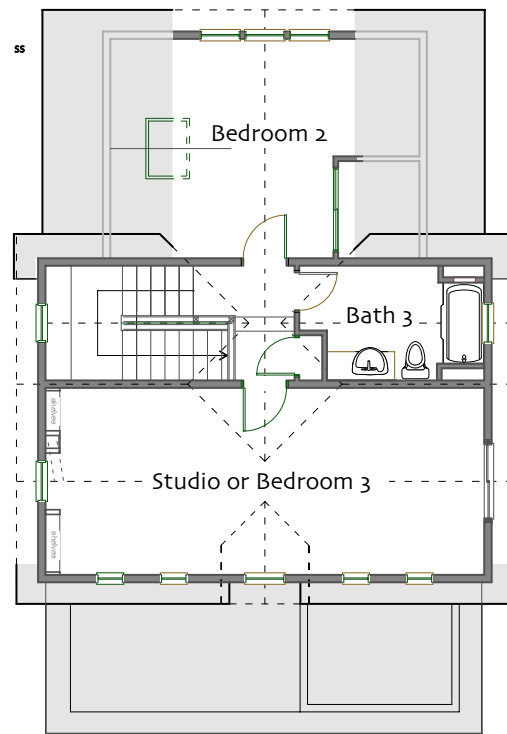
Bedroom 2	13' x 13'-6"
Studio	11'-6" x 27'
Bathroom 3	full

Total Heated Area: 1635 sq ft

Footprint 32' x 42'



First Floor



Second Floor



© 2020 Ross Chapin Architects • Sizes are approximate / Plans are subject to change

The GoodFit Collection

Cottages and Small Houses

PO Box 1595 . Langley, Washington 98260 . hello@goodfitplans.com . www.goodfitplans.com

Plumrose B