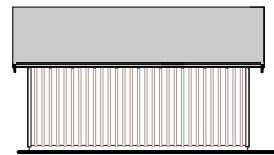
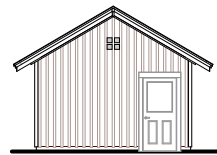
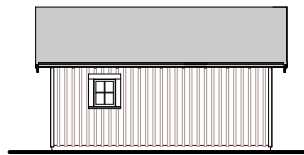
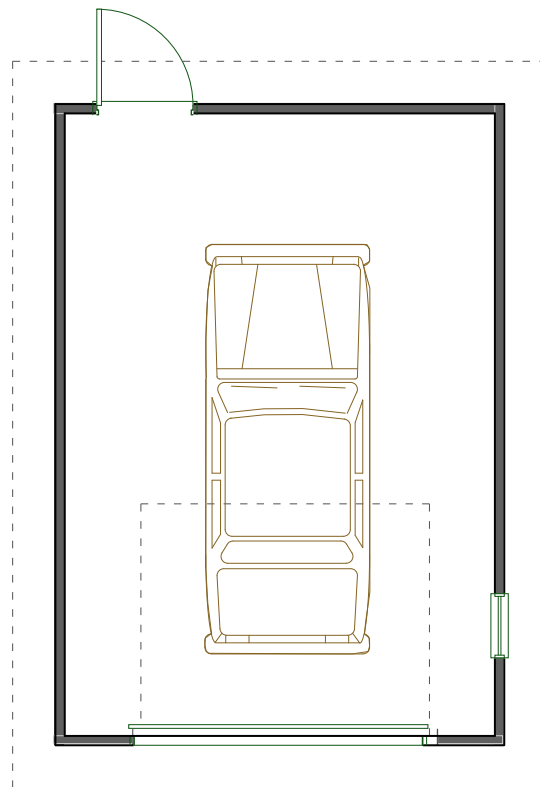


**Total Area:** 280 sf  
**Footprint:** 14' x 20'



© 2020 Ross Chapin Architects • Sizes are approximate / Plans are subject to change

# The GoodFit Collection

**Cottages and Small Houses**

PO Box 1595 . Langley, Washington 98260 . [hello@goodfitplans.com](mailto:hello@goodfitplans.com) . [www.goodfitplans.com](http://www.goodfitplans.com)

**Tomcat  
Garage**